

ELECTRIC BRATT PAN MANUAL TILTING 80 LT - DUPLEX TANK

Project:
Rev.:
Zone:
Location:



CODE
CR1018149

MODEL
Q90BR/E80

SERIE
QUEEN 9

GENERAL FEATURES

- AISI 304 stainless-steel bases and worktops, Scotch-Brite finish
- Depth of 900 mm for high power and performance
- Catalogue offers more than 350 standard models
- Worktop, base cabinet, base cabinet with doors and oven versions
- 20/10 worktop thickness
- Twin-piece knobs prevent infiltration of dirt and have an IPX5 water ingress protection rating
- Gas ranges having burners with various configurations and power ratings: 3.5 kW - 5.7 kW, 7 kW and 10 kW. Double-ring burners for 7 and 10 kW models
- Wide range of accessories

The knobs offer optimum grip and help the chef to have the setting controls right under his eyes. Special attention has also been paid to the knob bezel that has been expertly designed to avoid penetration of liquids and/or dirt. Thanks to the IPX5 water jet ingress protection rating, awarded after passing specific tests, knobs and knob bezels can be washed at the end of the working day without affecting performance or safety.



TECHNICAL DETAILS

ELECTRIC
MANUAL TILTING
ELECTRIC BRATT PAN MANUAL TILTING 80 LT - DUPLEX TANK

- Water filled via solenoid valve
- Self-balanced lid with double steel wall
- Safety device interrupting power supply when tub is lifted
- Adjustable temperature from 100 to 280°C.
- Heating element unit made of incoloy stainless steel heating elements;
- Safety thermostat.

ELECTRIC BRATT PAN MANUAL TILTING 80 LT - DUPLEX TANK

CODE
CR1018149

MODEL
Q90BR/E80

SERIE
QUEEN 9

TECHNICAL INFORMATION

| SPECIFICATIONS | DATA |
|-------------------------------|--|
| CODE | CR1018149 |
| DEFINITION | Q90BR/E80 BRASIERA EL.M80 VASCA DUPLEX |
| COMMERCIAL LINE | QUEEN |
| SUPPLY | ELETTRICA |
| WIDTH | 800 MM |
| DEPTH | 900 MM |
| HEIGHT | 870 MM |
| NET WEIGHT | 134,800 |
| VOLUME | 0,626 M3 |
| PACKAGING LENGTH | 850,000 |
| PACKAGING WIDTH | 1020,000 |
| PACKAGING HEIGHT | 1150,000 |
| PACKAGING VOLUME | 1,010 |
| PACKAGING GROSS WEIGHT | 150,000 |
| POWER SUPPLY VOLTAGE STANDARD | 380-415V 3N |
| FREQUENCY | 50-60 Hz |
| ELECTRIC POWER | 9,000 KW |
| IPX PROTECTION | IPX5 |
| CERTIFIED MODEL | Q90BR/E80 |
| CERTIFICATION NUMBER | - |

ELECTRIC BRATT PAN MANUAL TILTING 80 LT - DUPLEX TANK

| | | |
|-------------------|--------------------|------------------|
| CODE CR1018149 | MODEL Q90BR/E80 | SERIE QUEEN 9 |
|-------------------|--------------------|------------------|

ACCESSORIESES

| CODE | MODEL | DESCRIPTION |
|----------------|-----------|---|
| CR0592770 | ZA40 | FRONT PLINTH |
| CR0982789 | ZL90 | SIDE PLINTH SERIE 900 |
| MA97432000 | NXR | SET OF WHEELS NXR |
| MA97433000 | NXRI | SET OF WHEELS INOX NXRI |
| CR1015369 | QCH20 | DIRECTABLE WATER FLUE |
| CR0592869 | CR0592869 | 4 PIEDI X INSTALL.SU ZOCCOLO DI CEMENTO |
| CR1015339 | QPT | N. 4 PIEDINI IN ACCIAIO INOX PER INSTALLAZIONE SU PIANI |
| CR0592879 | CR0592879 | KIT ANTI RIBALTAMENTO 2 PIEDI X N900 |
| CR0592399 | NXTVT1 | KIT PANNELLI X BASE TECN.1 FRONTE NXTVT1 |
| CR0592409 | NXTVT2 | KIT PANNELLI X BASE TECN.2 FRONTI NXTVT2 |
| CR1018879 | Q90FTDX | FIANCO TERMINALE DESTRO QUEEN |
| CR1018889 | Q90FTSX | FIANCO TERMINALE SINISTRO QUEEN |
| CR0980009 | CANT | TUBULAR HANDRAIL FRONTALE (AL METRO LINEARE) |
| CR0980019 | 9CLAT | TUBULAR HANDRAIL LATERALE SERIE 900 |
| BN418031900211 | 9PRD | PIANO LATERALE RIBALTABILE DESTRO |
| BN418031900460 | 9PFD | PIANO LATERALE FISSO DESTRO |
| BN418031900221 | 9PRS | PIANO LATERALE RIBALTABILE SINISTRO |
| BN418031900470 | 9PFS | PIANO LATERALE FISSO SINISTRO |
| BN418031900121 | 9KR | KIT STATIC WARMER |

**ELECTRIC BRATT PAN MANUAL TILTING 80
LT - DUPLEX TANK**

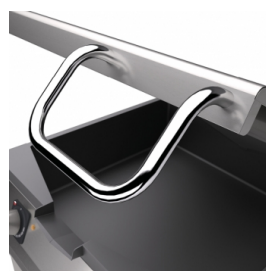
CODE
CR1018149

MODEL
Q90BR/E80

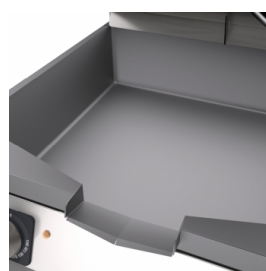
SERIE
QUEEN 9



PRODUCT'S RANGE PLUS



Self-balancing lids.



Wide-radius tilting cooking tank.

Equipment certified for low voltage
directive 2014/35 / EU according to
the international CB scheme.



Thanks to the IPX5 water jet ingress
protection rating, awarded after
passing specific tests, knobs and
knob bezels can be washed at the
end of the working day without
affecting performance or safety.



The front bar is a comfortable place
for the chef to lean on; it means you
will remain at a safe distance from
the worktop and therefore protects
from accidentally knocking against
both items lying on the worktop
and the knobs.

ELECTRIC BRATT PAN MANUAL TILTING 80 LT - DUPLEX TANK

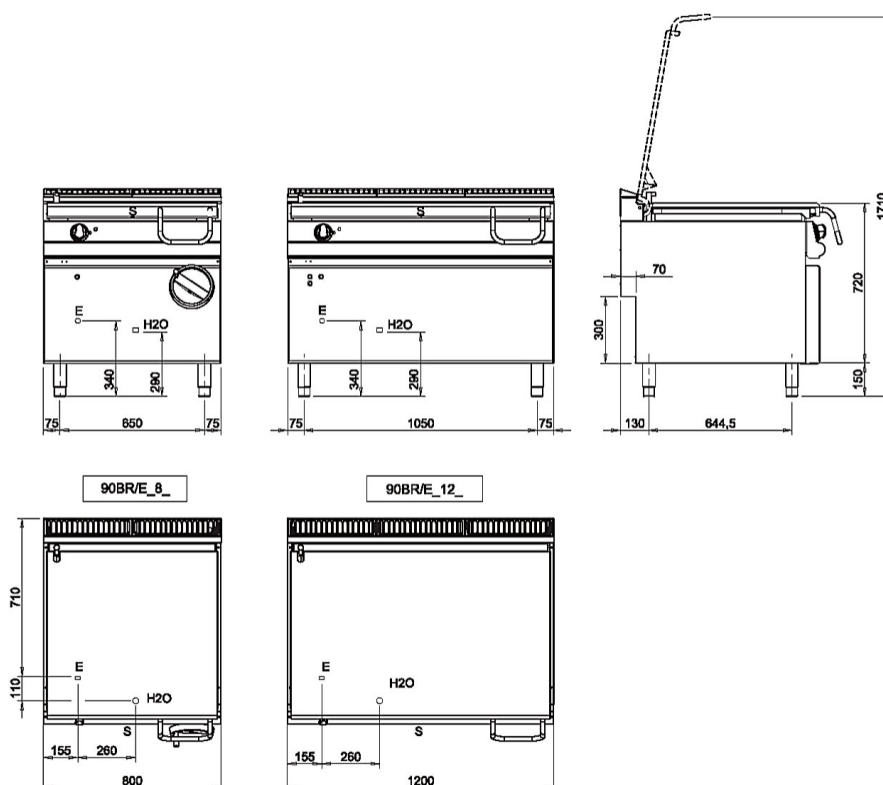
CODE
CR1018149

MODEL
Q90BR/E80

SERIE
QUEEN 9

SCHEMA DI INSTALLAZIONE - INSTALLATION DIAGRAM - INSTALLATIONSPLAN - SCHÉMA D'INSTALLATION - ESQUEMA DE INSTALACION -INSTALLATIESHEMA - IINSTALLATIONSRIJNINGAR

MISURE IN mm - DIMENSIONS IN mm - ABMESSUNGEN IN mm
MESURES EN mm - MEDIDAS EN mm - MATEN IN mm



Legenda - Legende - Key - Légende - Leyenda - Legenda

- E** Pressacavo entrata linea elettrica - Stopfbuchse - Electric cable stress relief
Presse étoupe de cable él. - Pisacable - Elektrische kabelwartel
- H20** Attacco arrivo acqua - Wasseranschluss - Water inlet
Arrivée eau - Union de agua - Wateraansluiting
EN ISO 228-1 G 3/4
- S** Scarico vasca - Wannenabflussrohr - Pan outlet
Vidange du bac - Descarga cuba - Water toevoer