

## Super ELECTRIC GRILL M80 - Stainless steel grill - M80 Top Version

Project: .....  
Rev.: .....  
Zone: .....  
Location: .....



CODE  
CR1657279

MODEL  
Q70SG/E800

SERIE  
QUEEN 7

### GENERAL FEATURES

In addition to offering the maximum choice of 2 mm thick solutions and plans and 90cm depths, this series is equipped with all the power, robustness and functionality you need to work efficiently.

External coatings and stainless steel feet Britite Scotch Finish.

Height of the adjustable work surface from 840 to 900mm.

Gamma modularity: 200-400-600-800-1200

Wide range of accessories.



### TECHNICAL DETAILS

Height adjustment device of the grids on two levels.

CANALINA WITH DRAWING HOLE AND DRAWER AND GRAGES COLLECTION AND RESTABLE RESERMPTIMES.

Internal drawer for the collection of residues.

4 types available grids: meat, fish, mixed with stainless steel and reversible cast iron/fish cast iron version

Grill accessories, humidifier, smoked: always available as accessories for all versions.

Electric version with overturning resistances to facilitate the cleaning process

Stainless steel grill

Top version

M80

**Super ELECTRIC GRILL M80 - Stainless steel  
grill - M80 Top Version**

CODE  
CR1657279

MODEL  
Q70SG/E800

SERIE  
QUEEN 7

TECHNICAL INFORMATION

| SPECIFICATIONS                | DATA        |
|-------------------------------|-------------|
| CODE                          | CR1657279   |
| MODEL                         | Q70SG/E800  |
| COMMERCIAL LINE               | QUEEN       |
| SUPPLY                        | ELETTRICA   |
| WIDTH                         | 800 MM      |
| DEPTH                         | 700 MM      |
| HEIGHT                        | 250 MM      |
| POWER SUPPLY VOLTAGE STANDARD | 380-415V 3N |
| ELECTRIC POWER                | 12 KW       |

**Super ELECTRIC GRILL M80 - Stainless steel  
grill - M80 Top Version**

|           |            |         |
|-----------|------------|---------|
| CODE      | MODEL      | SERIE   |
| CR1657279 | Q70SG/E800 | QUEEN 7 |

ACCESSORIESES

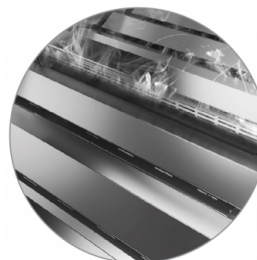
| CODE      | MODEL | DESCRIPTION |
|-----------|-------|-------------|
| CR1656559 |       |             |
| CR1656569 |       |             |

## Super ELECTRIC GRILL M80 - Stainless steel grill - M80 Top Version

CODE  
CR1657279

MODEL  
Q70SG/E800

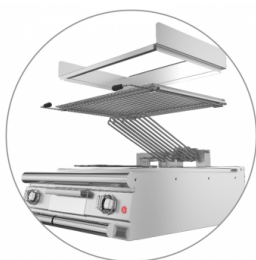
SERIE  
QUEEN 7



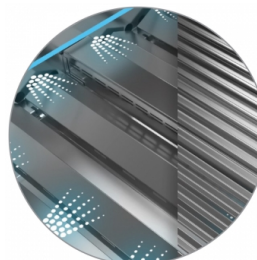
Smoking that can be installed on the M80 - M120 models for a barbecue taste menu



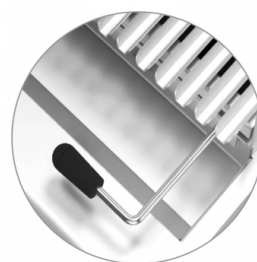
Larger and wider fat channel



Electric version with overturning resistances to facilitate the cleaning process



Wetfill accessory for optimal management of multiple types of cooking.



Grilled height adjustment for the management of different types of cooking

4 types available grids: meat, fish, mixed with stainless steel and reversible cast iron/fish cast iron version