

## Electric Super Fry top M60 Piastra in AISI - rough - on Cabinet Thermost. control

Project: .....  
Rev.: .....  
Zone: .....  
Location: .....



CODE  
CR1655119

MODEL  
Q90SFTV/E613

SERIE  
QUEEN 9

### GENERAL FEATURES

Oltre ad offrire la massima scelta di soluzioni e piani da 2 mm di spessore e profondità da 90cm, questa serie è dotata di tutta la potenza, la robustezza e la funzionalità di cui hai bisogno per lavorare con efficienza.

Rivestimenti esterni e piedini in acciaio INOX finitura Scotch Brite.

Altezza del piano di lavoro regolabile da 840 a 900mm.

Modularità di gamma: 200-400-600-800-1200

Ampia gamma di accessori.



### TECHNICAL DETAILS

15 mm thick cooking plate totally independent of the top.

Large canal canopy along the entire perimeter of the plate for the collection of cooking residues, inclined towards the front for the decelusion of the liquids in the large drawer.

Large fat collection drawer.

Uniform cooking temperature on the whole plate. Optimizing the heat in the coach area and increasing the comfort of operators in the kitchen.

Plate not welded to the machine with optimization of the structural points subjected to thermal stress

Too full cap in stainlessness, equipped as standard for the management of the flooding of the canaline

Plate not welded to speed up maintenance interventions and any replacements in users

New version with identical useful surface of cooking and reduced energy power. An increase in yield per cm<sup>2</sup> which allows a reduction in consumption up to 15% compared to traditional versions

Electric version: heating by means of armored resistances in incoloy. Thermostatically controlled cooking temperature and adjustable from 110 to 280 ° C. Safety thermostat.

Thermostat

M60

on Cabinet

**Electric Super Fry top M60 Piastra in AISI -  
rough - on Cabinet Thermost. control**

CODE  
CR1655119

MODEL  
Q90SFTV/E613

SERIE  
QUEEN 9

TECHNICAL INFORMATION

SPECIFICATIONS	DATA
CODE	CR1655119
MODEL	Q90SFTV/E613
COMMERCIAL LINE	QUEEN
SUPPLY	ELETTRICA
WIDTH	600 MM
DEPTH	900 MM
HEIGHT	870 MM
POWER SUPPLY VOLTAGE STANDARD	380-415V 3N
ELECTRIC POWER	10,5 KW
PLATE DIMENSIONS	505 X 660 MM

**Electric Super Fry top M60 Piastra in AISI -  
rough - on Cabinet Thermost. control**

CODE CR1655119	MODEL Q90SFTV/E613	SERIE QUEEN 9
-------------------	-----------------------	------------------

## ACCESSORIESES

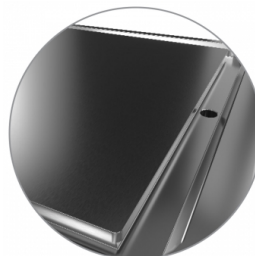
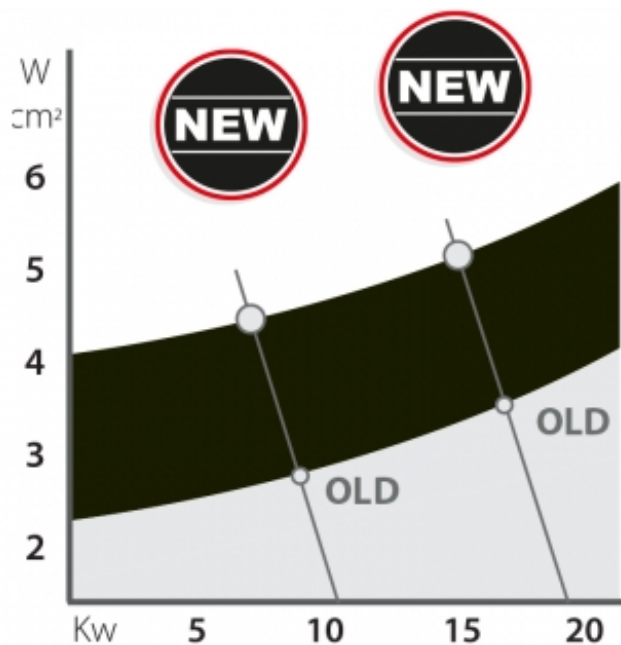
CODE	MODEL	DESCRIPTION
CR1354989	PRPC	RASCHIETTO PER PIASTRA CROMATA
CR1354999	PKLR	LAME PER RASCHIETTO (10 PCS)
CR1356399	RPR	Raschietto piastra rigata
CR1658629		
CR1658609	97TFT	Tappo per pulizia plancha
CR1658679		
9KSCFT	9KSCFT	Kit Scarico continuo
79KEA	79KEA	Kit Erogatore acqua

**Electric Super Fry top M60 Piastra in AISI -  
rough - on Cabinet Thermost. control**

CODE  
CR1655119

MODEL  
Q90SFTV/E613

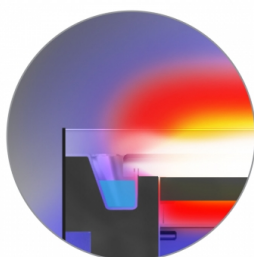
SERIE  
QUEEN 9



Alarmable gully for the collection of cooking residues on the entire perimeter of the facilitated cleaning plate, and better maintenance of the humidity of the food in cooking



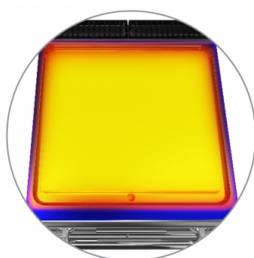
Large fatty drawer with capacity of the entire volume of the perimeter channel



Thermal cut that facilitates the user and adjacent machinery.



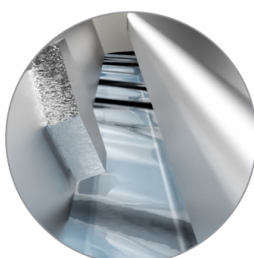
The design of the striped plate guarantees cleaning until the end of the plate



Uniform cooking temperature on the whole plate. Optimizing the heat in the coach area and increasing the comfort of operators in the kitchen.



Plate not welded to speed up maintenance interventions and any replacements in users



Disponibile come accessorio il kit erogatore acqua

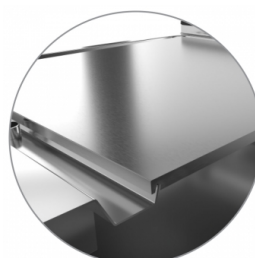


Plate not welded to the machine with optimization of the structural points subjected to thermal stress